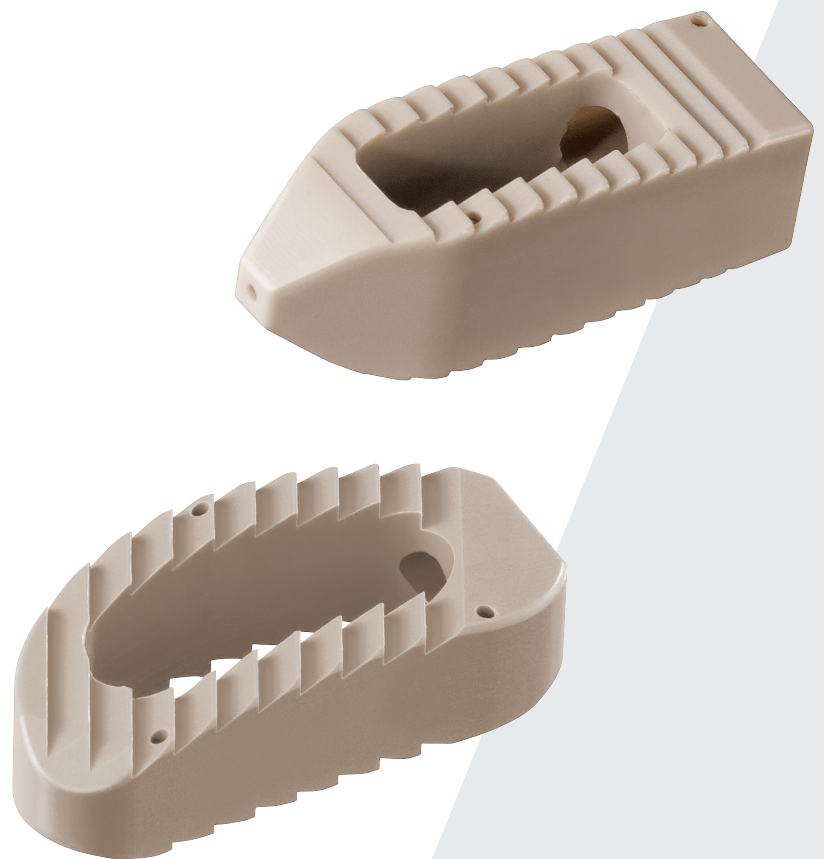


Surgical technique

**pezo-P™ | pezo-T™**

PEEK cage family



# 100 years of reliability and German precision

Spinal systems by ulrich medical® stand for quality  
"Made in Germany."

They are the successful result of systematic development  
activities and many years of experience in medical technology.  
For more than 100 years, we have done our best every day  
for our customers and for patient health with our proprietary  
and innovative products.

**Leading-edge technology and competence from one  
source**




# Content

	Page	
Introduction	4	1
Labeling and symbols	5	2
System application	6	3
pezo-PTM implants	7	4
pezo-TTM implants	8	5
pezo-PTM   pezo-TTM instruments	9	6
Surgical approach possibilities	14	7
Surgical technique	15	8
Implant removal	29	9
pezo-PTM   pezo-TTM trays	30	10
pezo-PTM   pezo-TTM components	31	11

# Introduction

## General information

 The user has to ensure that the most current versions of the complete product materials provided as overall documentation of the system are on hand and considered. The required product materials are: system related instructions for use, surgical technique and, if applicable, supplements, assembly and disassembly instructions, as well as "Processing manual implants and instruments" UH 1100. These are also available at: **www.ifu.ulrichmedical.com**. A printed copy may be delivered within 7 days, upon request.

The information regarding optional items is valid exclusively for countries in which they are approved.

This surgical technique describes the implant, the instruments, and the steps involved in the application of the pezo system. It is not sufficient as the sole basis for a successful application of the system. It is recommended to

master the surgical technique with an experienced surgeon.

pezo-P and pezo-T are implants for lumbosacral interbody fusion. The PLIF technique (Posterior Lumbar Interbody Fusion) or the TLIF technique (Transforaminal Lumbar Interbody Fusion) can be used. The cages can be used for bridging and stabilizing the intervertebral space with the purpose of supporting bony fusion. The reconstruction of the spinal profile is achieved through the size, height, and angulation of the cages, among others. Additional instrumentation is necessary, e.g. with a posterior pedicle screw-rod system. The implants are inserted into the intervertebral space either single or in pairs.

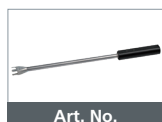
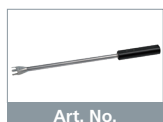
pezo-P and pezo-T are part of a universal family of cages for posterior and anterior approaches. A decisive benefit of the product is the uniform functionality of the inserter for all cages. It provides a stable and secure connection

between the implant and the instruments and allows a clear view of the surgical site due to its slender design. The simple application as well as the coherent radiographic marker concept enable the reliable placement of the cage.







The cages are characterized by their intelligent design. The easy insertion and high primary stability of the implant are attributable to its anatomically aligned shape and sophisticated tooting. The cages are to be filled with bone/bone graft material and provide optimal space for bony fusion.

The posterior cages form a system with an identical set of instruments, such that the decision on whether to use a pezo-P or pezo-T cage can be reached during a procedure. The implants are delivered in individual sterile packages.

The small pictures at the bottom of the page show the step-by-step application of the instruments that are used for the surgical steps on the double page. Pictures with instruments that had been used before are colored dark gray.




# Labeling and symbols

	Consult instructions for use
	Caution
	Consult assembly and disassembly instructions with special cleaning instructions
	<b>MR Conditional</b> – A product which does not demonstrate any deliberate hazards in the specific MRI environment
	CE mark with identification number of the notified body
	Do not use if package is damaged


## MR Conditional

Non-clinical testing has demonstrated that all implant components of the pezo system are MR conditional.

 For further information please refer to the respective IFU: [www.ifu.ulrichmedical.com](http://www.ifu.ulrichmedical.com).

 Do not use if package is damaged

## Additional information for processing, assembly and disassembly

The user has to ensure that the latest version of the "Processing manual implants and instruments" UH 1100 is on hand and considered. For individual instruments which are correspondingly marked , in the surgical technique, the "Assembly and

disassembly instructions with special cleaning instructions" have to be considered. These are also available at: [www.ifu.ulrichmedical.com](http://www.ifu.ulrichmedical.com).

# System application

## Intended use

pezo is an implant group – consisting of pezo-P, pezo-T, pezo-A – for support of the intervertebral space in the lumbar and lumbosacral spine in humans with the purpose of supporting bone fusion of the vertebral bodies. pezo is inserted individually or in pairs between two vertebral bodies. The implants can also serve as a means of restoring the spinal profile. Additional stabilizing instrumentation is necessary, for example, with a pedicle screw-rod-system.

## Indications

Indications for fusion procedures are for example:

- Degenerative disk disease
- Post-diskectomy syndrome
- Revision following disk surgery
- Degenerative instability
- Lytic spondylolisthesis
- Congenital malposition, such as scoliosis
- Spinal stenosis with clinical instability
- Pseudarthrosis

## Contraindications

- Patients with fever or leukocytosis
- Patients with infections associated with the spine (e.g. spondylodiscitis)
- Patients with a history of material allergy or who tend to react to foreign bodies
- Patients whose general medical or psychological condition is unfavorable for- or could be worsened by the procedure; careful consideration is required on the part of the treating physician/surgeon for these patients
- Patients with inadequate bone quality or quantity (e.g. severe osteoporosis, osteopenia, osteomyelitis)
- Pregnancy

# pezo-P™ implants



**CS 3301-XX**  
pezo-P, size S

Footprint: 24x10 mm  
Angulation: 5°  
Heights: 7 to 13 mm\*



**CS 3302-XX**  
pezo-P, size M

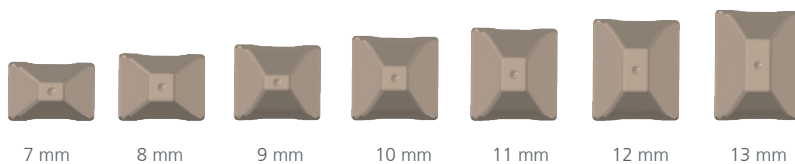
Footprint: 29x10 mm  
Angulation: 5°  
Heights: 7 to 13 mm\*



**CS 3303-XX**  
pezo-P, size L

Footprint: 29x10 mm  
Angulation: 12°  
Heights: 8 to 13 mm\*

**Optional** \* Height 14 mm



7 mm

8 mm

9 mm

10 mm

11 mm

12 mm

13 mm

## Radiographic marker placement

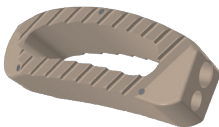


Lateral view



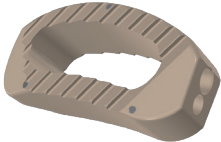
a-p Elevation

# pezo-T™ implants



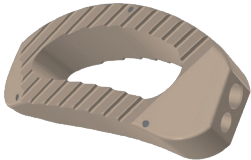
**CS 3315-XX  
pezo-T, size S**

Footprint: 29x11 mm  
 Angulation: 5°  
 Heights: 7 to 13 mm\*



**CS 3316-XX  
pezo-T, size M**

Footprint: 29x14 mm  
 Angulation: 5°  
 Heights: 7 to 13 mm\*



**CS 3317-XX  
pezo-T, size L**

Footprint: 34x16 mm  
 Angulation: 5°  
 Heights: 7 to 13 mm\*

**Optional** \* Height 14 mm

5



7 mm    8 mm    9 mm    10 mm    11 mm    12 mm    13 mm

### Radiographic marker placement



Lateral view



a-p Elevation

# pezo-P™ | pezo-T™ instruments



**CS 3340-10**

Chisel, straight, width 10 mm



**CS 3341-10**

Sharp spoon curette, straight, serrated



**CS 3341-11**

Sharp spoon curette, double cranked right, serrated



**CS 3341-12**

Sharp spoon curette, double cranked left, serrated



**CS 3344-07**

Reamer, height 7 mm, width 3 mm



**CS 3344-08**

Reamer, height 8 mm, width 4 mm



**CS 3344-09**

Reamer, height 9 mm, width 4 mm



**CS 3344-10**

Reamer, height 10 mm, width 4 mm



**CS 3344-11**

Reamer, height 11 mm, width 4 mm



**CS 3344-12**

Reamer, height 12 mm, width 5 mm



**CS 3344-13**

Reamer, height 13 mm, width 5 mm



**CS 3346**

Click-on T-handle

# pezo-P™ | pezo-T™ instruments



**CS 3348-01**

Hook, cranked right,  
width 7 mm



**CS 3348-02**

Hook, cranked left,  
width 7 mm



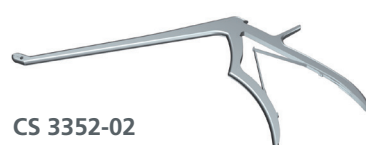
**CS 3350**

Curette, width 7 mm



**CS 3352-01**

Rongeur, straight, jaw width 5 mm,  
jaw length 10 mm



**CS 3352-02**

Rongeur, cutting upwards,  
jaw width 5 mm, jaw length  
10 mm



**CS 3354-01**

Funnel, straight



**CS 3354-04**

Tamper



**CS 3355-07-05**

Trial implant, height 7 mm,  
width 10 mm, angle 5°



**CS 3355-08-05**

Trial implant, height 8 mm,  
width 10 mm, angle 5°



**CS 3355-09-05**

Trial implant, height 9 mm,  
width 10 mm, angle 5°



**CS 3355-10-05**

Trial implant, height 10 mm,  
width 10 mm, angle 5°



**CS 3355-11-05**

Trial implant, height 11 mm,  
width 10 mm, angle 5°



**CS 3355-12-05**

Trial implant, height 12 mm,  
width 10 mm, angle 5°



**CS 3355-13-05**

Trial implant, height 13 mm,  
width 10 mm, angle 5°



**CS 3356-08-12**

Trial implant, height 8 mm,  
width 10 mm, angle 12°



**CS 3356-09-12**

Trial implant, height 9 mm,  
width 10 mm, angle 12°



**CS 3356-10-12**

Trial implant, height 10 mm,  
width 10 mm, angle 12°



**CS 3356-11-12**

Trial implant, height 11 mm,  
width 10 mm, angle 12°



**CS 3356-12-12**

Trial implant, height 12 mm,  
width 10 mm, angle 12°



**CS 3356-13-12**

Trial implant, height 13 mm,  
width 10 mm, angle 12°



**CS 3357-01**

Length measuring instrument PLIF,  
length 24 and 29 mm



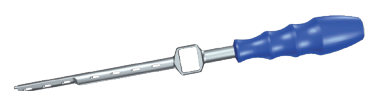
**CS 3359-02**

Impactor TLIF



**CS 3359-03**

Impactor PLIF



**CS 3360-01** 

Insertor,  
length 300 mm

# pezo-P™ | pezo-T™ instruments



**CS 3360-02** 

Locking rod, length 300 mm



**CS 3360-09** 

Adjustor



**CS 3361-01** 

Sleeve correction instrument,  
length 300 mm



**CS 3361-02** 

Locking rod correction instrument,  
length 300 mm



**CS 3361-09** 

Adjustor correction instrument



**CS 3362**

Remover for instruments

**Optional**



**CS 3341-20**

Curette, curved

**Optional**



**CS 3341-21**

Curette, double cranked right

**Optional**



**CS 3341-22**

Curette, double cranked left

**Optional**



**CS 3344-14**

Reamer, height 14 mm,  
width 5 mm

**Optional**



**CS 3355-14-05**

Trial implant, height 14 mm,  
width 10 mm, angle 5°

**Optional**



**CS 3356-14-12**

Trial implant, height 14 mm,  
width 10 mm, angle 12°

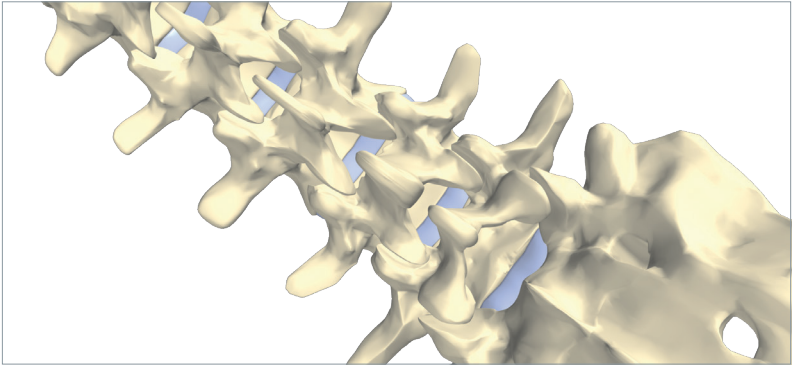
**Optional**



**CS 3357-02**

Width measuring instrument TLIF,  
width 14 and 16 mm

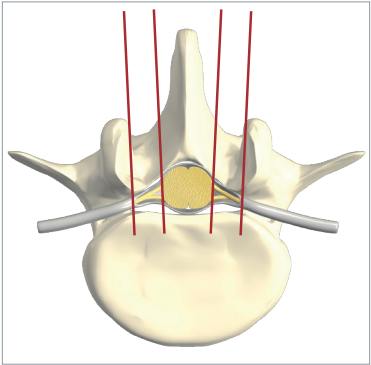
# Surgical approach possibilities



### Position and approach to the spine

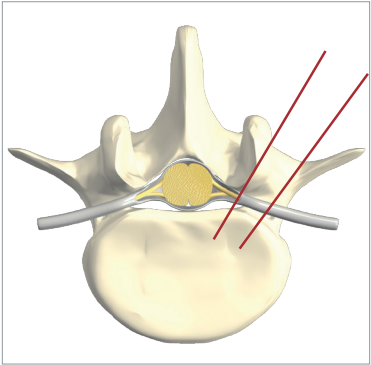
The typical position (prone position) and approach are used when performing the PLIF or TLIF technique.

7



### PLIF technique approach

Bilateral approach

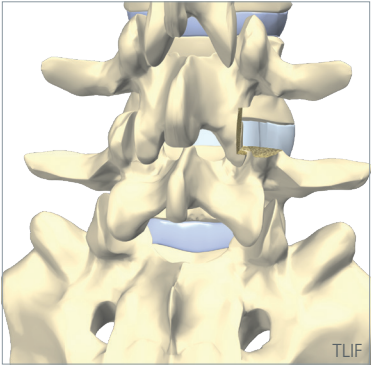
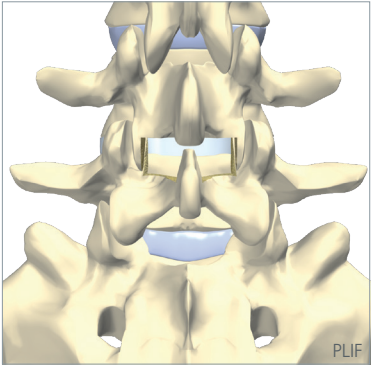


### TLIF technique approach

Unilateral approach

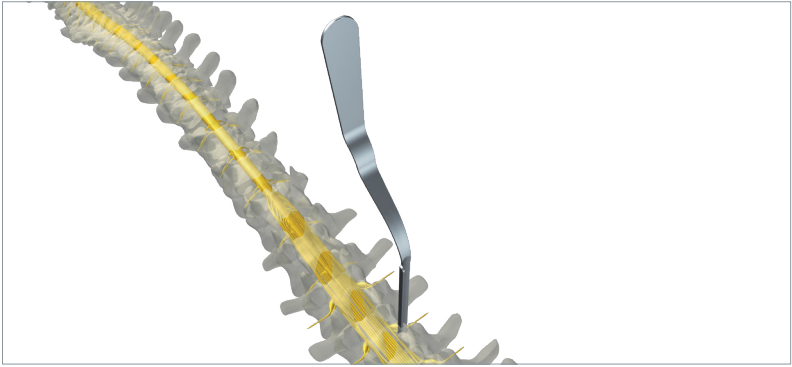
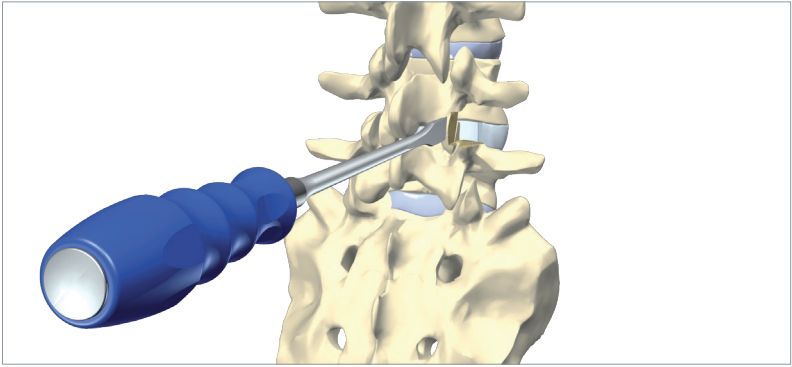


# Surgical technique



### Preparation

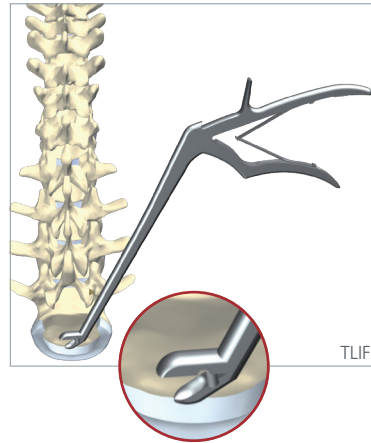
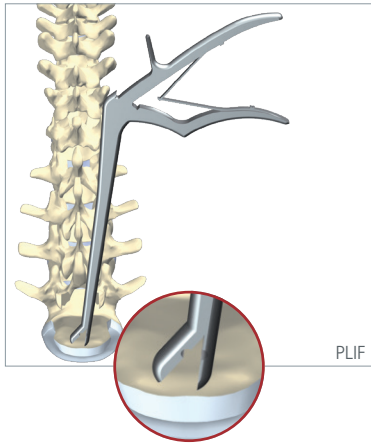
In the case of the PLIF technique perform a laminotomy in order to enlarge the interspinous window; in the case of the TLIF technique perform a partial facetectomy, in other words remove the craniolateral edge of the facet in order to open an approach to the intervertebral space. Use the chisel (CS 3340-10) for this purpose.



### Protection of the neural structures

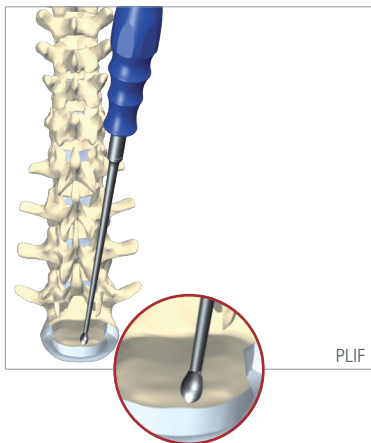
Use the hooks (CS 3348-01, -02) to protect the neural structures.

# Surgical technique



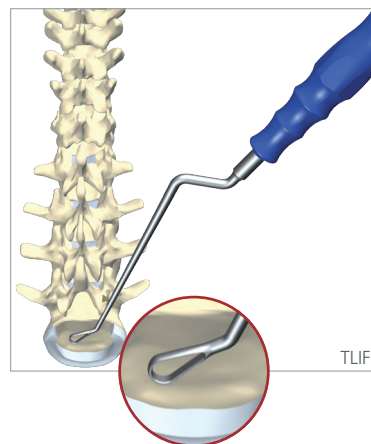
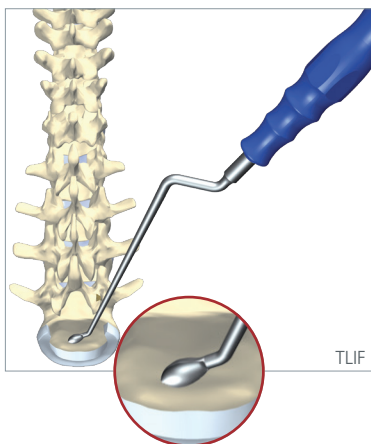
## Preparation of the intervertebral space

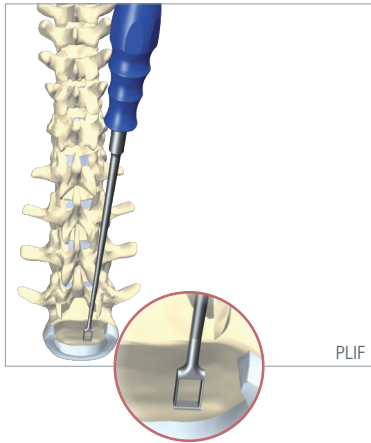
After opening the intervertebral space clear it using the rongeurs (CS 3352-01, -02).



## Preparation of the intervertebral space and the end plates

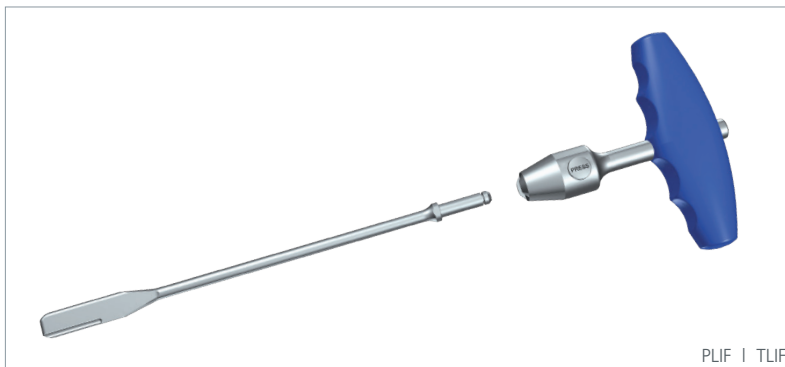
Clear the intervertebral space using the sharp spoon curettes (CS 3341-10, -11, -12) or the curettes (CS 3341-20, -21, -22) and remove cartilage from the end plates. Specially angled instruments for the TLIF approach are provided.





### Preparation of the end plates

There is also a box-shaped curette (CS 3350) available for the PLIF approach.

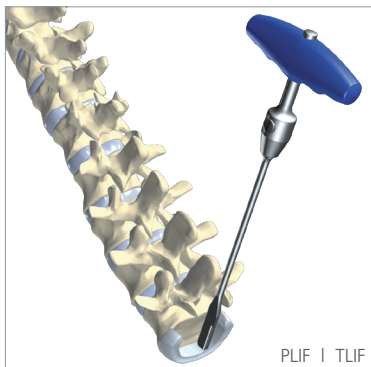
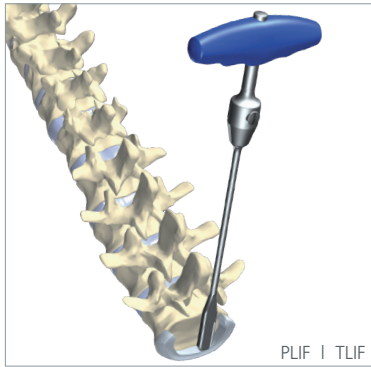


### Assembly of the reamer

Assemble the click-on T-handle (CS 3346) and the reamer (CS 3344-XX).



# Surgical technique



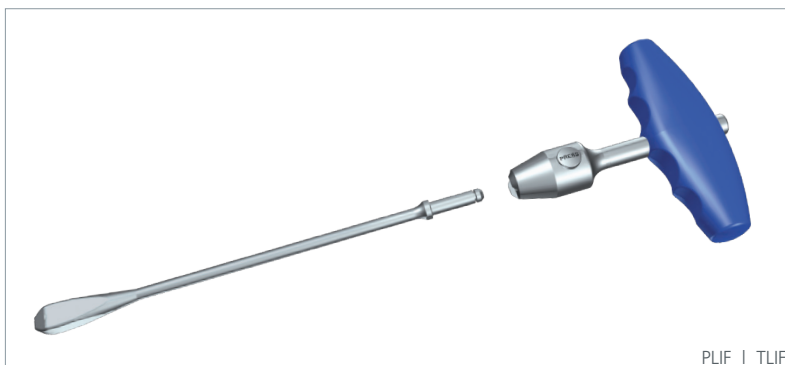
## Distraction and preparation of the end plates

In order to distract the intervertebral space and prepare the end plates insert the reamer (CS 3344-XX) with the flat side in the horizontal position and then turn. The width of the reamer increases with increasing height.

**⚠ Important:** The reamers have a sharp and a blunt edge. Rotation to the right means cutting while rotation to the left means blunt distraction.

Starting with the smallest size (height of 7 mm) expand in 1 mm increments until the intervertebral space reaches the desired height. Remove the reamer.

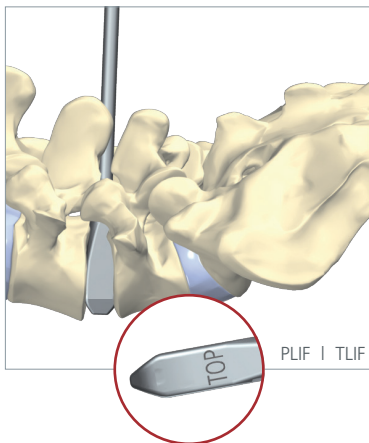
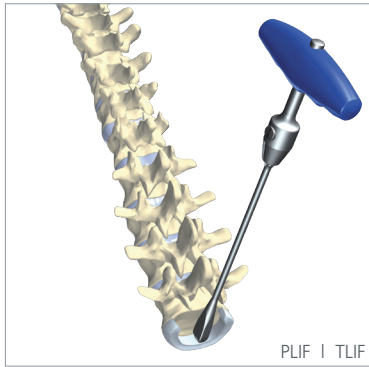
**⚠ Important:** Use lateral C-arm control. Pay special attention to ensure that the spinal canal and the neural structures are protected.



## Assembly of the trial implant

Assemble the T-handle (CS 3346) to the corresponding trial implant (CS 3355-XX-XX or CS 3356-XX-XX).





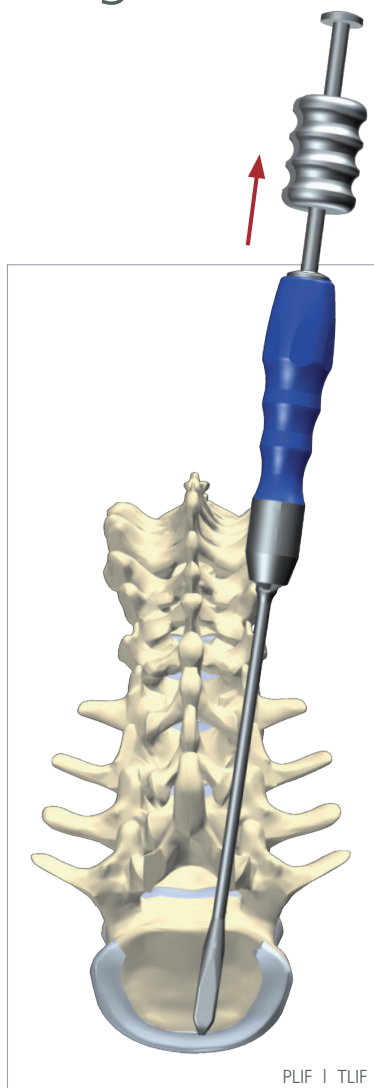
### Determination of the implant height

Insert the suitably sized trial implant (CS 3355-XX-XX or CS 3356-XX-XX). In the case of the trial implant ensure that the side marked with "top" points to the cranial end.

In order to determine the height for **pezo-P** use trial implants with 5° (CS 3355-XX-XX) or 12° (CS 3356-XX-XX). For **pezo-T** use also trial implants with 5° (CS 3355-XX-XX).

**⚠ Important:** Use lateral C-arm control.

# Surgical technique



## Removal of the trial implant

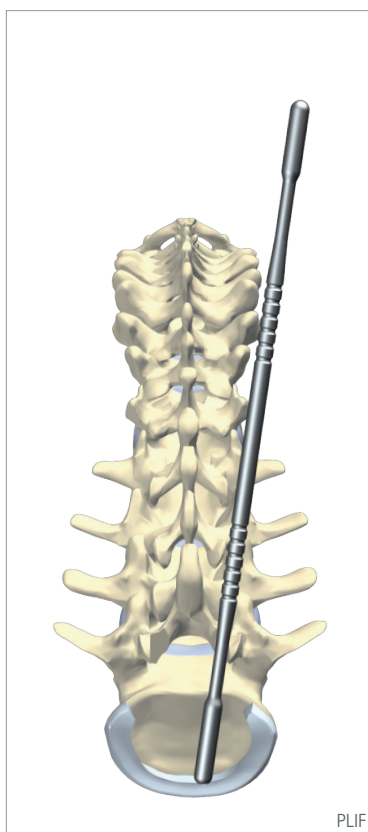
In order to remove the trial implant, remove the T-handle (CS 3346) and assemble the remover for instruments (CS 3362). With the weight on the remover strike the pad in the direction away from the handle T (CS 3346).

**⚠ Important:** Pay special attention to ensure that the neural structures are protected.

## Determination of the implant length

For pezo-P determine the implant length using the length measuring instrument, length 24 and 29 mm (CS 3357-01).

Determine the length of the pezo-T implant based on pre-operative scans.

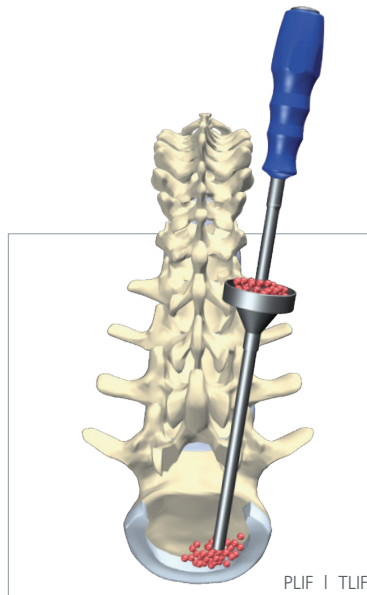


## Optional

### Determination of the implant width

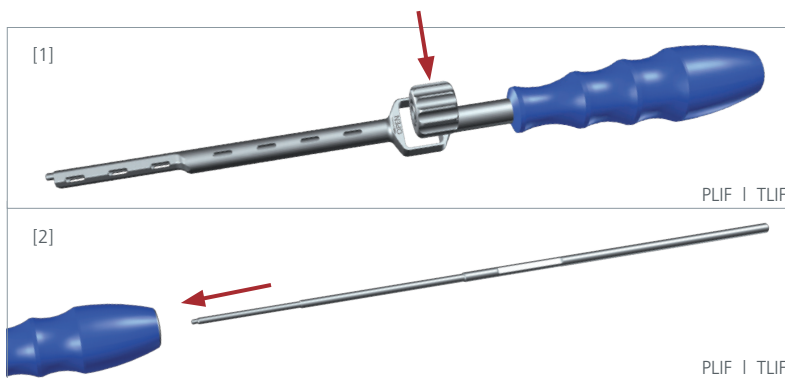
If necessary, the width of the pezo-T implant can be determined using the width-measuring instrument (CS 3354-02).





### Bone grafting

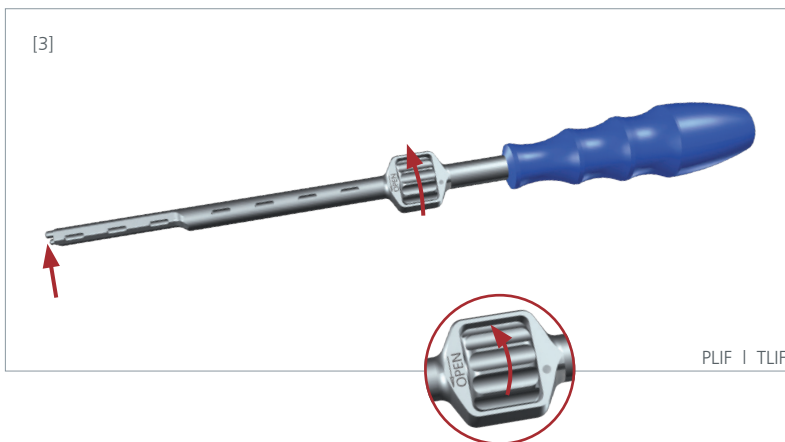
The anterior region of the intervertebral space can be filled in with bone or bone graft material. Use the funnel (CS 3354-01) with corresponding tamper (CS 3354-04) for this purpose.



### Assembly of the inserter

Place the adjuster (CS 3360-09) in the cage of the inserter (CS 3360-01) [1].

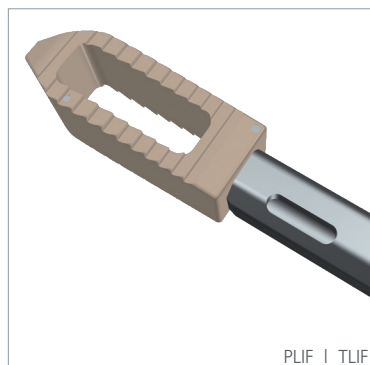
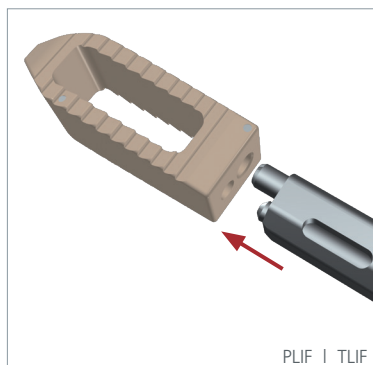
Then slide the locking rod (CS 3360-02) into the inserter (CS 3360-01) [2]. The adjuster must be secured against falling out.



Turn the adjuster clockwise (in the opposite direction of the "open" arrow), and advance the locking rod until the second pin is visible [3].

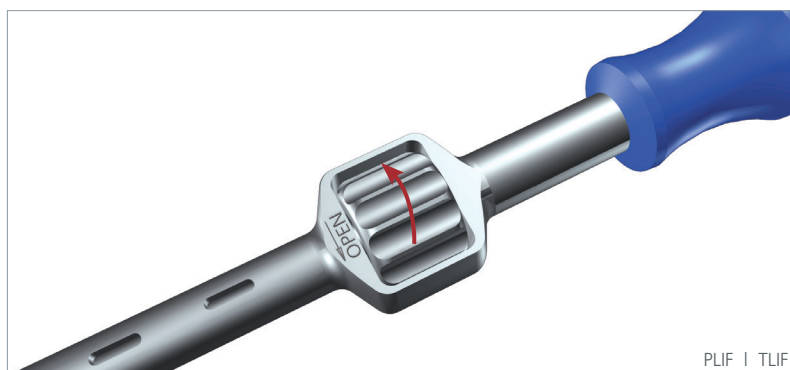


# Surgical technique



## Assembly of the implant and the inserter

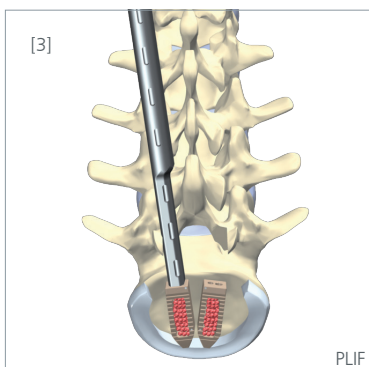
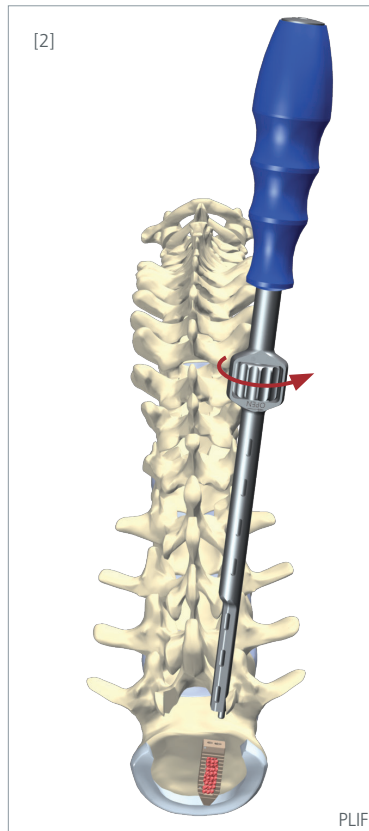
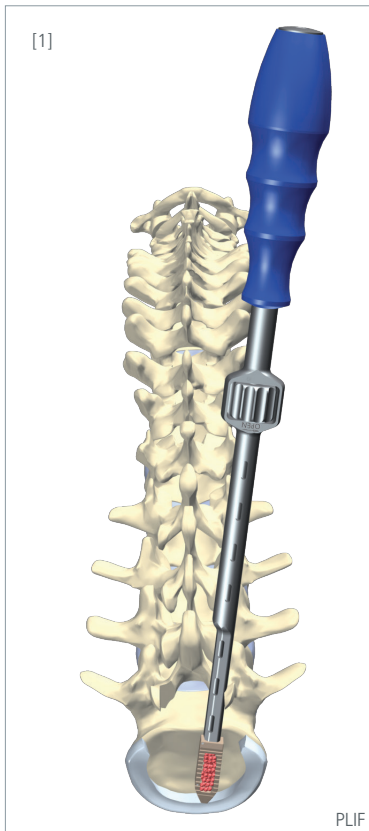
Select the correct implant size. Connect the implant with the inserter by screwing in the locking rod by turning the adjuster. Make sure that the pin catches in the drill-hole. Check the stability of the connection.



## Filling the implant

Subsequently fill the cage with bone or bone graft material. The tamper (CS 3354-04) may be used in order to compact the material.





### Inserting the pezo-P implant

Insert the pezo-P implant and place into the final position [1].

**⚠ Important:** An overload (bending, leverage) of the inserter is to be avoided.

**⚠ Important:** Use lateral C-arm control.

In order to disengage the inserter (CS 3360-01, -02 and -09) turn the adjuster in the direction of the arrow ("open") and remove the inserter [2].

Place the second pezo-P cage on the opposite side using the same technique [3].

# Surgical technique



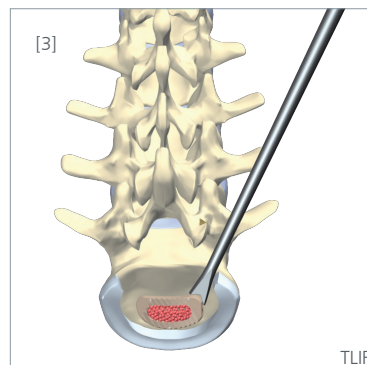
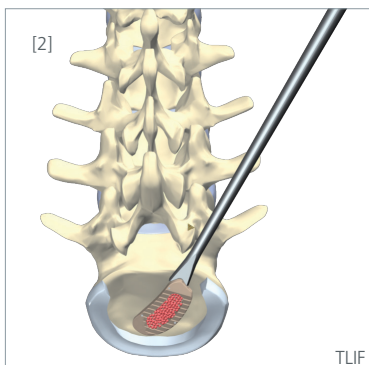
## Inserting the pezo-T implant

Place the pezo-T implant obliquely in accordance with the approach such that the tip is above the midline if possible [1].

**⚠ Important:** An overload (bending, leverage) of the inserter is to be avoided.

**⚠ Important:** Use lateral C-arm control.

In order to disengage the inserter (CS 3360-01, -02 and -09) turn the adjustor (CS 3360-09) in the direction of the arrow ("open") and remove the inserter (see page 23).

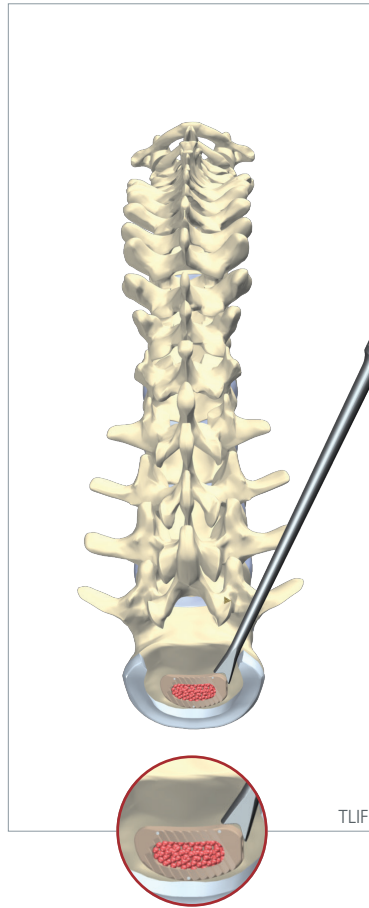
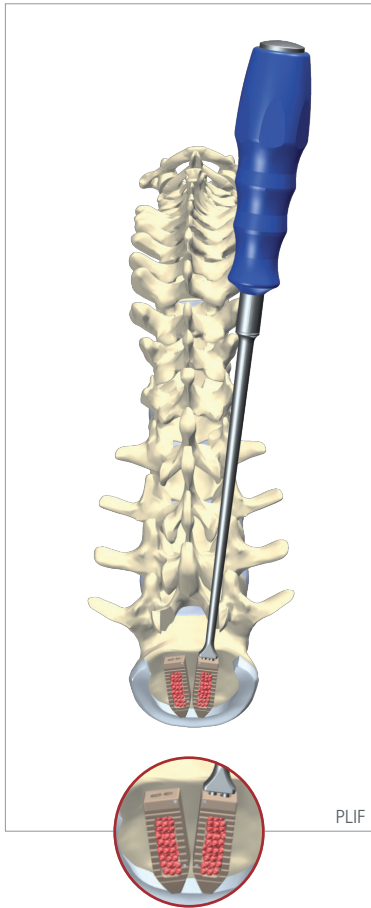


Turn the pezo-T implant with the impactor TLIF (CS 3359-02) and place into the final position [2] + [3].

**⚠ Important:** Use lateral C-arm control.

The note on implant correction on page 28 must be observed.

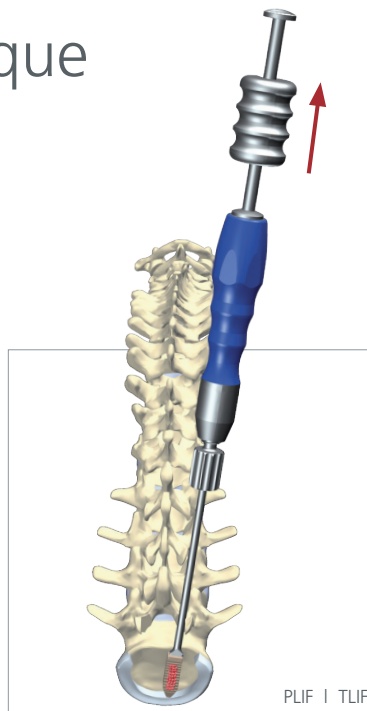




### Manipulation of the implant

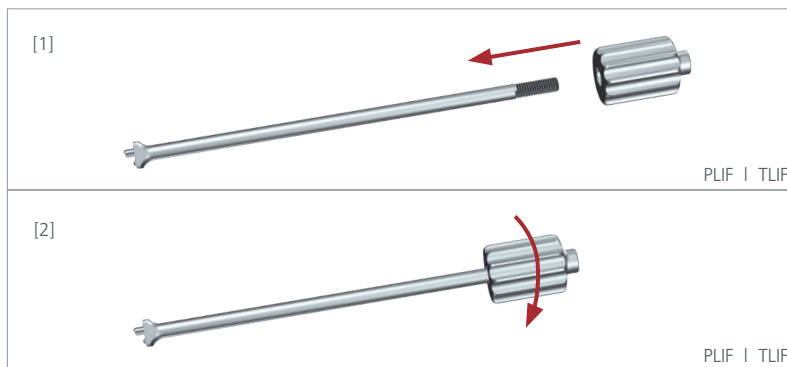
The impactor PLIF (CS 3359-03) can be used for further positioning of the pezo-P and the impactor TLIF (CS 3359-02) can be used for further positioning of the pezo-T.

# Surgical technique



## Correction of the implant

If the implant was not positioned correctly, the correction instrument can be used to retract it.

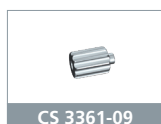
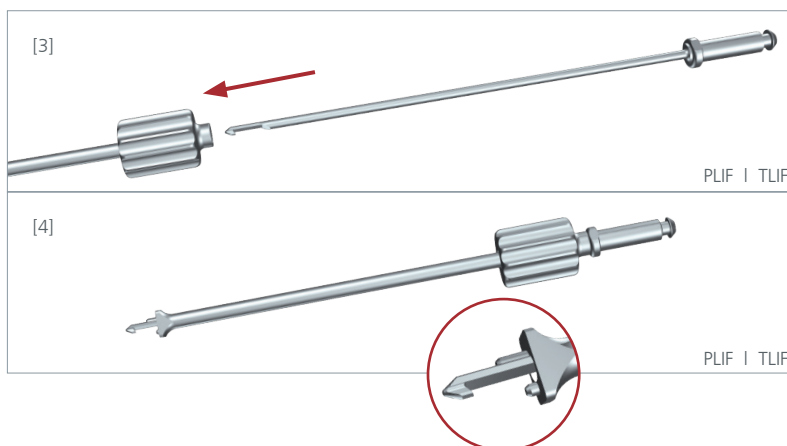


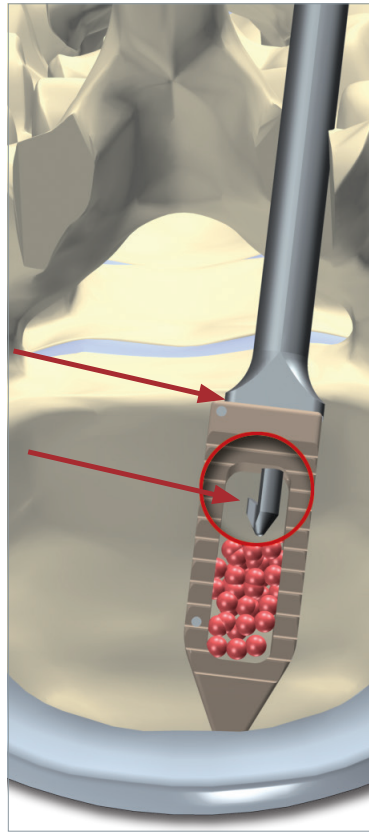
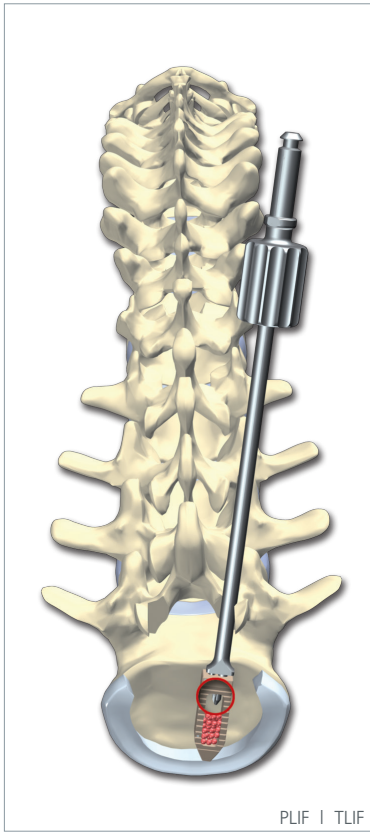
## Assembly of the correction instrument

Place the adjuster (CS 3361-09) on the sleeve of the correction instrument (CS 3361-01) [1] and attach it by screwing it in counter-clockwise (left-hand thread) [2].

**⚠ Important:** Firmly tighten the adjuster until the stop.

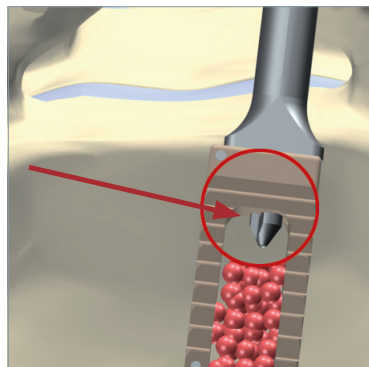
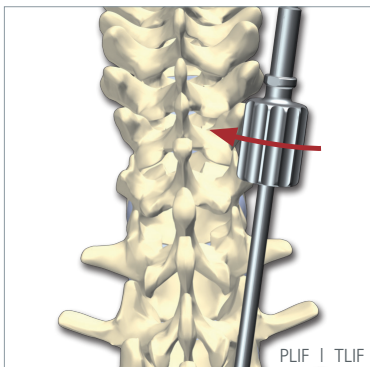
Then insert the locking rod (CS 3361-02) into the sleeve of the correction instrument (CS 3361-01) [3] and advance it all the way forward [4].





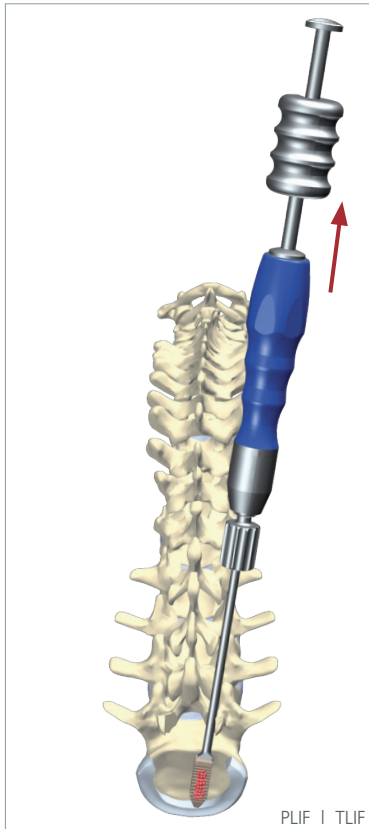
**Assembly of the implant and the correction instrument**

Insert the hook of the locking rod into the large hole of the implant and attach the instrument flush to the cage.



Attach the correction instrument by turning the adjuster clockwise until it is tight. The hook catches on the inner wall of the cage.

# Surgical technique



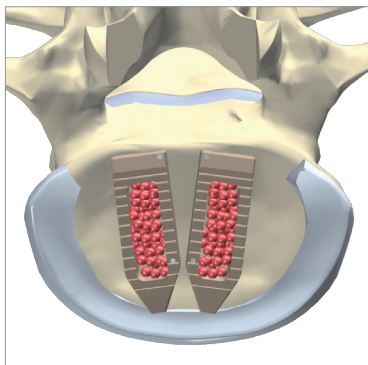
## Correction of the implant

Connect the correction instrument (CS 3361-01, -02 and -09) to the remover for instruments (CS 3362) and then retract the implant.

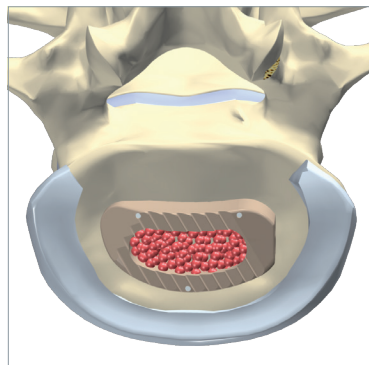
**Note:** Use of the correction instrument with pezo-T is only possible before the implant has been placed into the final position.

**⚠ Important:** Use lateral C-arm control.

Rotate the adjustor in a counter clockwise direction to loosen the correction instrument from the implant.



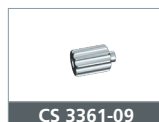
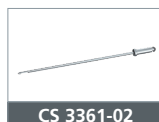
Complete instrumentation pezo-P



Complete instrumentation pezo-T

## Bone grafting

To achieve fusion, the implant should always be inserted with bone or bone graft material into the intervertebral space.



# Implant removal

## **Removal of the implant**

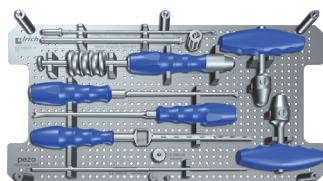
The implant is not intended for removal unless there are complications, implant failure or a delayed healing phase (no fusion within 2 years). If an implant removal is necessary, the doctor must specify the procedure individually for each patient.

# pezo-P™ | pezo-T™ trays



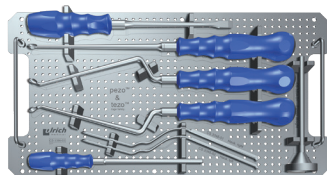
**CS 3396-01**

Layer 1  
for pezo-P/T / tezo-P/T  
instruments



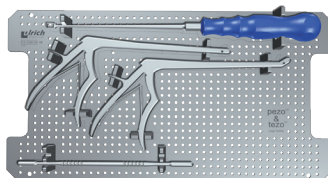
**CS 3396-02**

Layer 2  
for pezo-P/T instruments



**CS 3396-03**

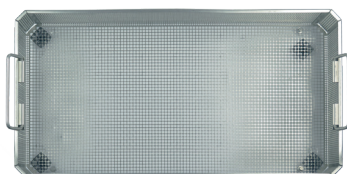
Layer 1  
for pezo-P/T / tezo-P/T  
preparation instruments



**CS 3396-04**

Layer 2  
for pezo-P/T / tezo-P/T  
preparation instruments

10



**CS 7040-4**

Tray for implants and instruments



**CS 7040-6**

Tray lid

# pezo-P™ | pezo-T™ components

Implants	Product number
pezo-P, height 7 mm, length 24 mm, angle 5°	CS 3301-07
pezo-P, height 8 mm, length 24 mm, angle 5°	CS 3301-08
pezo-P, height 9 mm, length 24 mm, angle 5°	CS 3301-09
pezo-P, height 10 mm, length 24 mm, angle 5°	CS 3301-10
pezo-P, height 11 mm, length 24 mm, angle 5°	CS 3301-11
pezo-P, height 12 mm, length 24 mm, angle 5°	CS 3301-12
pezo-P, height 13 mm, length 24 mm, angle 5°	CS 3301-13
pezo-P, height 7 mm, length 29 mm, angle 5°	CS 3302-07
pezo-P, height 8 mm, length 29 mm, angle 5°	CS 3302-08
pezo-P, height 9 mm, length 29 mm, angle 5°	CS 3302-09
pezo-P, height 10 mm, length 29 mm, angle 5°	CS 3302-10
pezo-P, height 11 mm, length 29 mm, angle 5°	CS 3302-11
pezo-P, height 12 mm, length 29 mm, angle 5°	CS 3302-12
pezo-P, height 13 mm, length 29 mm, angle 5°	CS 3302-13
pezo-P, height 8 mm, length 29 mm, angle 12°	CS 3303-08
pezo-P, height 9 mm, length 29 mm, angle 12°	CS 3303-09
pezo-P, height 10 mm, length 29 mm, angle 12°	CS 3303-10
pezo-P, height 11 mm, length 29 mm, angle 12°	CS 3303-11
pezo-P, height 12 mm, length 29 mm, angle 12°	CS 3303-12
pezo-P, height 13 mm, length 29 mm, angle 12°	CS 3303-13

Implants	Optional	Product number
pezo-P, height 14 mm, length 24 mm, angle 5°		CS 3301-14
pezo-P, height 14 mm, length 29 mm, angle 5°		CS 3302-14
pezo-P, height 14 mm, length 29 mm, angle 12°		CS 3303-14

# pezo-P™ | pezo-T™ components

Implants	Product number
pezo-T, height 7 mm, length x width 29x11 mm, angle 5°	CS 3315-07
pezo-T, height 8 mm, length x width 29x11 mm, angle 5°	CS 3315-08
pezo-T, height 9 mm, length x width 29x11 mm, angle 5°	CS 3315-09
pezo-T, height 10 mm, length x width 29x11 mm, angle 5°	CS 3315-10
pezo-T, height 11 mm, length x width 29x11 mm, angle 5°	CS 3315-11
pezo-T, height 12 mm, length x width 29x11 mm, angle 5°	CS 3315-12
pezo-T, height 13 mm, length x width 29x11 mm, angle 5°	CS 3315-13
pezo-T, height 7 mm, length x width 29x14 mm, angle 5°	CS 3316-07
pezo-T, height 8 mm, length x width 29x14 mm, angle 5°	CS 3316-08
pezo-T, height 9 mm, length x width 29x14 mm, angle 5°	CS 3316-09
pezo-T, height 10 mm, length x width 29x14 mm, angle 5°	CS 3316-10
pezo-T, height 11 mm, length x width 29x14 mm, angle 5°	CS 3316-11
pezo-T, height 12 mm, length x width 29x14 mm, angle 5°	CS 3316-12
pezo-T, height 13 mm, length x width 29x14 mm, angle 5°	CS 3316-13
pezo-T, height 7 mm, length x width 34x16 mm, angle 5°	CS 3317-07
pezo-T, height 8 mm, length x width 34x16 mm, angle 5°	CS 3317-08
pezo-T, height 9 mm, length x width 34x16 mm, angle 5°	CS 3317-09
pezo-T, height 10 mm, length x width 34x16 mm, angle 5°	CS 3317-10
pezo-T, height 11 mm, length x width 34x16 mm, angle 5°	CS 3317-11
pezo-T, height 12 mm, length x width 34x16 mm, angle 5°	CS 3317-12
pezo-T, height 13 mm, length x width 34x16 mm, angle 5°	CS 3317-13

Implants	Optional	Product number
pezo-T, height 14 mm, length x width 29x11 mm, angle 5°		CS 3315-14
pezo-T, height 14 mm, length x width 29x14 mm, angle 5°		CS 3316-14
pezo-T, height 14 mm, length x width 34x16 mm, angle 5°		CS 3317-14

Instruments	Product number
Chisel, straight, width 10 mm	CS 3340-10
Sharp spoon curette, straight, serrated	CS 3341-10
Sharp spoon curette, double cranked right, serrated	CS 3341-11
Sharp spoon curette, double cranked left, serrated	CS 3341-12
Reamer, height 7 mm, width 3 mm	CS 3344-07
Reamer, height 8 mm, width 4 mm	CS 3344-08
Reamer, height 9 mm, width 4 mm	CS 3344-09
Reamer, height 10 mm, width 4 mm	CS 3344-10
Reamer, height 11 mm, width 4 mm	CS 3344-11
Reamer, height 12 mm, width 5 mm	CS 3344-12
Reamer, height 13 mm, width 5 mm	CS 3344-13
Click-on T-handle	CS 3346
Hook, cranked right, width 7 mm	CS 3348-01
Hook, cranked left, width 7 mm	CS 3348-02
Curette, width 7 mm	CS 3350
Rongeur, straight, jaw width 5 mm, jaw length 10 mm	CS 3352-01
Rongeur, cutting upwards, jaw width 5 mm, jaw length 10 mm	CS 3352-02
Funnel, straight	CS 3354-01
Tamper	CS 3354-04
Trial implant, height 7 mm, width 10 mm, angle 5°	CS 3355-07-05
Trial implant, height 8 mm, width 10 mm, angle 5°	CS 3355-08-05
Trial implant, height 9 mm, width 10 mm, angle 5°	CS 3355-09-05
Trial implant, height 10 mm, width 10 mm, angle 5°	CS 3355-10-05
Trial implant, height 11 mm, width 10 mm, angle 5°	CS 3355-11-05
Trial implant, height 12 mm, width 10 mm, angle 5°	CS 3355-12-05
Trial implant, height 13 mm, width 10 mm, angle 5°	CS 3355-13-05
Trial implant, height 8 mm, width 10 mm, angle 12°	CS 3356-08-12
Trial implant, height 9 mm, width 10 mm, angle 12°	CS 3356-09-12
Trial implant, height 10 mm, width 10 mm, angle 12°	CS 3356-10-12
Trial implant, height 11 mm, width 10 mm, angle 12°	CS 3356-11-12
Trial implant, height 12 mm, width 10 mm, angle 12°	CS 3356-12-12
Trial implant, height 13 mm, width 10 mm, angle 12°	CS 3356-13-12
Length measuring instrument PLIF, length 24 and 29 mm	CS 3357-01
Impactor TLIF	CS 3359-02
Impactor PLIF	CS 3359-03

# pezo-P™ | pezo-T™ components

Instruments	Product number
Insertor, length 300 mm	CS 3360-01
Locking rod, length 300 mm	CS 3360-02
Adjustor	CS 3360-09
Sleeve correction instrument, length 300 mm	CS 3361-01
Locking rod correction instrument, length 300 mm	CS 3361-02
Adjustor correction instrument	CS 3361-09
Remover for instruments	CS 3362

Instruments	<b>Optional</b>	Product number
Curette, curved		CS 3341-20
Curette, double cranked right		CS 3341-21
Curette, double cranked left		CS 3341-22
Reamer, height 14 mm, width 5 mm		CS 3344-14
Trial implant, height 14 mm, width 10 mm, angle 5°		CS 3355-14-05
Trial implant, height 14 mm, width 10 mm, angle 12°		CS 3356-14-12
Width measuring instrument TLIF, width 14 and 16 mm		CS 3357-02



patented  
or/and  
pat. pend.

Over a Century  
of Innovation

CE 0123

**ulrich**  
medical

**ulrich GmbH & Co. KG** | Buchbrunnenweg 12 | 89081 Ulm | Germany  
Phone: +49 (0)731 9654-0 | Fax: +49 (0)731 9654-2705  
spine@ulrichmedical.com | www.ulrichmedical.com