

# obeliscPRO™ Lateral Endplates

One system— many variations.



# obeliscPRO™LE - Topics

One system – many variations.

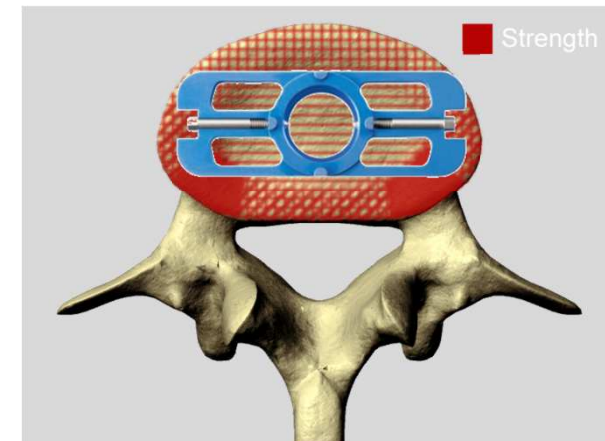
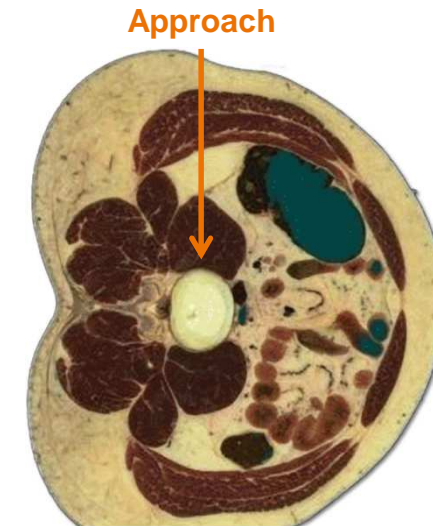
- Lateral Endplate idea
- Indications
- System
- Features & Benefits



# obeliscPRO™LE - Idea

One system – many variations.

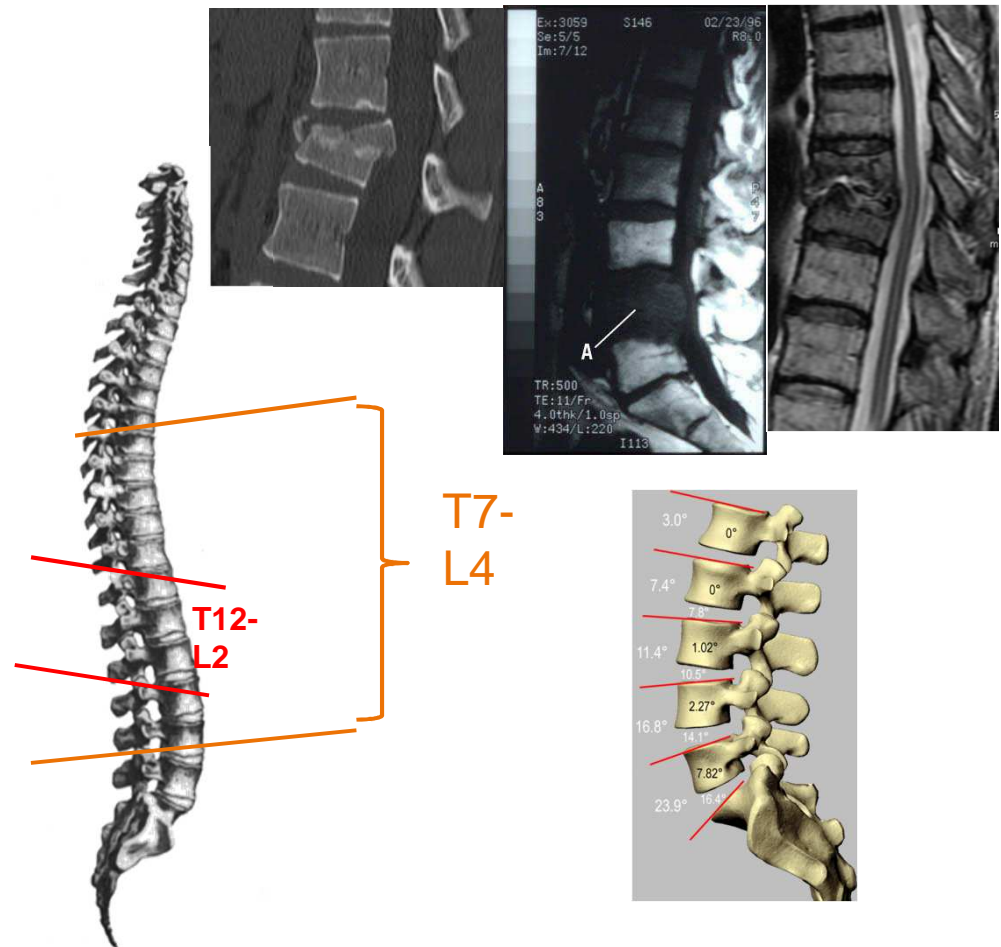
- Optimal placement implant via lateral (MIS) approach
- Less subsidence by using the corticalis as support surface



# obeliscPRO™LE - Indications

One system – many variations.

- Corpectomies:
  - Fractures
  - Tumor
  - Infections
- T7 – L4
- Majority T12 – L2



# obeliscPRO™LE - Literature

One system – many variations.

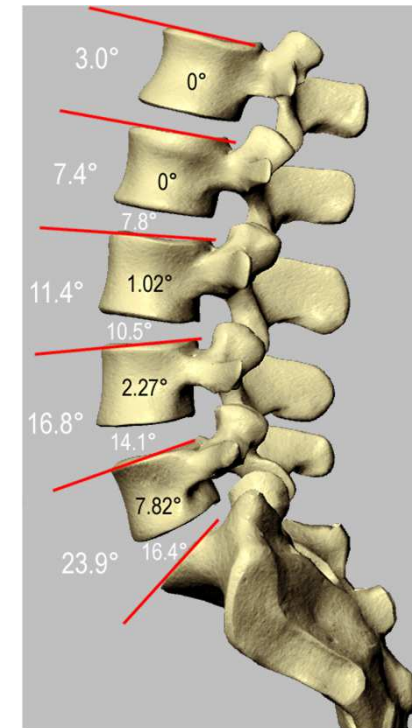
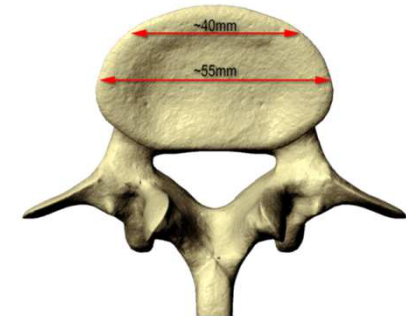
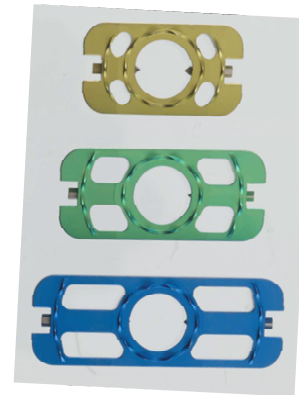
- *“A rectangular footplate design is **more resistant to subsidence than a circular footplate** design in an ex vivo biomechanical model. The new design had **higher load to failure** even in the presence of a central defect. These findings suggest that rectangular footplates may provide **better subsidence resistance** when used to reconstruct defects after thoracolumbar corpectomy.”*  
Pekmezci M, McDonald E, Kennedy A, Dedini R, Ames C, McClellan RT, Deviren V. Can a novel rectangular footplate provide higher resistance to subsidence when compared to circular footplates? An ex vivo biomechanical study. Spine 2012;27(19):E1177-E1181
- *“The **mini-open anterolateral approach** to the thoracolumbar spine is an **appealing alternative** to the traditional open approaches. This technique, however, is **technically demanding** and requires proficiency in the use of minimally invasive spinal surgery instruments and retractors.”*  
Baaj AA, Dakwar E, Le TV, Smith DA, Ramos E, Smith WD, Uribe JS. Complications of the mini-open anterolateral approach to the thoracolumbar spine. J Clin Neurosci. 2012 Sep;19(9):1265-7.
- *“The **mini-open lateral approach** for thoracic and lumbar corpectomy was shown to be **safe and effective** in this series while **avoiding many of the associated morbidities** of thoracotomies for anterior column reconstruction and open posterior approaches.”*  
Smith WD, Dakwar E, Le TV, Christian G, Serrano S, Uribe JS. Minimally invasive surgery for traumatic spinal pathologies: A mini-open, lateral approach in the thoracic and lumbar spine. Spine (Phila Pa 1976). 2010 Dec 15;35(26 Suppl):S338-46.

# obeliscPRO™LE - System

One system – many variations.

## Endplate options

- 3 endplate footprints – color-coded  
35x20mm (yellow)  
45x20mm (green)  
55x20mm (blue)
- 4 angulations per footprint  
0°, 5°, 10°, 15°
- 1 set screw each side
- Fit all obeliscPRO center pieces  
→ height: 20 -132mm

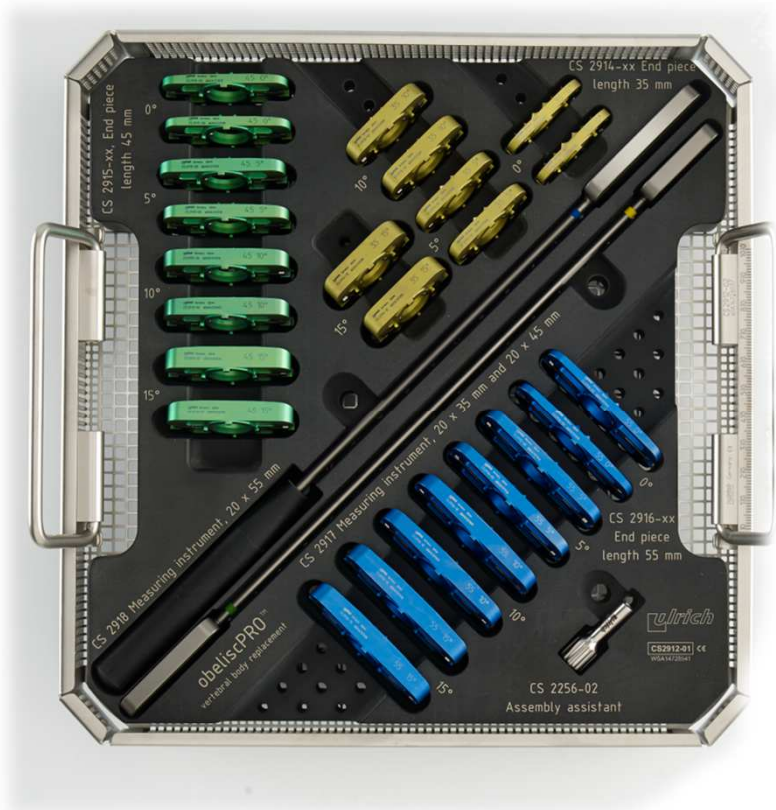


# obeliscPRO™LE - System

One system – many variations.

## Extension Set

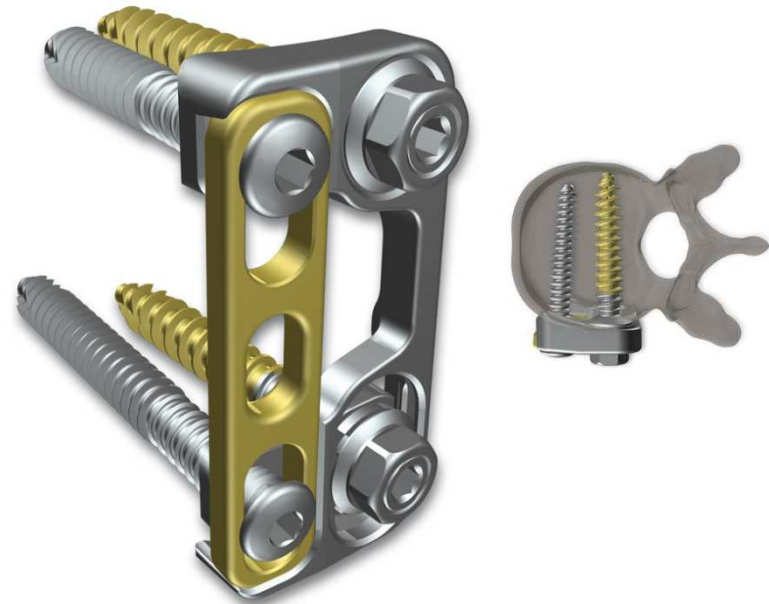
- Stand alone tray
- Simple design and easy to use
- Color coding for fast identification
- Color coded lollipop trial instruments
- Complements existing obeliscPRO sets  
→ Simply add to your obeliscPRO sets!!!



# obeliscPRO™LE - Synergies

One system – many variations.

golden gate & obeliscPRO LE = Ideal solution for lateral approach corpectomies!





# obeliscPRO™LE – Features & Benefits

One system – many variations.

| Advantage obeliscPRO LE                                                               | Benefit                                                                                                                                           |
|---------------------------------------------------------------------------------------|---------------------------------------------------------------------------------------------------------------------------------------------------|
| Selection of Lateral end plate options                                                | <ul style="list-style-type: none"> <li>• Improved support of lateral and minimally-invasive approaches</li> <li>• Ideal anatomical fit</li> </ul> |
| Exact height adjustment                                                               | <ul style="list-style-type: none"> <li>• Distraction and compression in-situ</li> <li>• Unlimited height adjustment options</li> </ul>            |
| Large rectangular end plates                                                          | <ul style="list-style-type: none"> <li>• Lower risk of subsidence</li> </ul>                                                                      |
| End plate assembly and color coding                                                   | <ul style="list-style-type: none"> <li>• Easy to use and to assemble</li> </ul>                                                                   |
| Golden Standard vertebral body replacement system, which allows all approaches = 360° | <ul style="list-style-type: none"> <li>• Reliable</li> <li>• Versatile</li> <li>• Simple</li> <li>• Fast</li> </ul>                               |

# obeliscPRO™LE

One system – many variations.



*Thank you for your attention!*