

The HRC Locking Cage for Cervical, PLIF and ALIF is the result of thinking differently.

The concept delivers a unique anatomic, self-anchoring cage that exists in three forms. Common to all, however, is the smart locking mechanism that enables you to work with confidence, and patients to benefit from Zimmer's vision and ongoing reliability.

Stability

The titanium alloy blade offers immediate stability and prevents the cage from shifting after placement. Its geometry enables anchoring and tension at the end of turning with a single, simple rotation, avoiding any weakening of the polymer.

All Cervical and PLIF implants have either a smooth surface (when easy insertion is of paramount importance) or a 'toothed' structure (suitable for absolute assurance of immediate stability).



- **Cervical:**
AP-Lengths: 12 mm and 14 mm
Heights: 5 mm – 7 mm with 1 mm increments
- **PLIF:**
Non-lordotic and lordotic (5.2°) versions
AP-Lengths: 18 mm and 22 mm
Heights: 8 mm – 12 mm with 1 mm increments
- **ALIF:**
Different Lordotic angles: 4.4° to 12.4°
AP-Lengths: 23 mm and 26 mm
Heights: 9 mm – 15 mm with 2 mm increments

HRC sterile Implants

Smooth Surface

Cervical

Partnumber	Description
01.03901.105	HRC cervical Cage, size 5, ap-length 12 mm
01.03901.106	HRC cervical Cage, size 6, ap-length 12 mm
01.03901.107	HRC cervical Cage, size 7, ap-length 12 mm
01.03901.205	HRC cervical Cage, size 5, ap-length 14 mm
01.03901.206	HRC cervical Cage, size 6, ap-length 14 mm
01.03901.207	HRC cervical Cage, size 7, ap-length 14 mm

Lumbar PLIF - Non lordotic

Partnumber	Description
01.03902.208	HRC non lordotic PLIF Cage, size 8, ap-length 22 mm
01.03902.209	HRC non lordotic PLIF Cage, size 9, ap-length 22 mm
01.03902.210	HRC non lordotic PLIF Cage, size 10, ap-length 22 mm
01.03902.211	HRC non lordotic PLIF Cage, size 11, ap-length 22 mm
01.03902.212	HRC non lordotic PLIF Cage, size 12, ap-length 22 mm
01.03902.107	HRC non lordotic PLIF Cage, size 7, ap-length 18 mm
01.03902.108	HRC non lordotic PLIF Cage, size 8, ap-length 18 mm
01.03902.109	HRC non lordotic PLIF Cage, size 9, ap-length 18 mm
01.03902.110	HRC non lordotic PLIF Cage, size 10, ap-length 18 mm

Lumbar PLIF - Lordotic

Partnumber	Description
01.03903.208	HRC PLIF lordotic Cage, size 8, ap-length 22 mm
01.03903.209	HRC PLIF lordotic Cage, size 9, ap-length 22 mm
01.03903.210	HRC PLIF lordotic Cage, size 10, ap-length 22 mm
01.03903.211	HRC PLIF lordotic Cage, size 11, ap-length 22 mm
01.03903.212	HRC PLIF lordotic Cage, size 12, ap-length 22 mm

Lumbar ALIF

Partnumber	Description
01.03904.109	HRC ALIF Cage, size 9, ap-length 23 mm
01.03904.111	HRC ALIF Cage, size 11, ap-length 23 mm
01.03904.211	HRC ALIF Cage, size 11L, ap-length 26 mm
01.03904.113	HRC ALIF Cage, size 13A, ap-length 23 mm
01.03905.113	HRC ALIF Cage, size 13B, ap-length 23 mm
01.03906.113	HRC ALIF Cage, size 13C, ap-length 23 mm
01.03904.213	HRC ALIF Cage, size 13LA, ap-length 26 mm
01.03905.213	HRC ALIF Cage, size 13LB, ap-length 26 mm
01.03904.115	HRC ALIF Cage, size 15A, ap-length 23 mm
01.03905.115	HRC ALIF Cage, size 15B, ap-length 23 mm
01.03905.215	HRC ALIF Cage, size 15L, ap-length 26 mm
01.03904.100	HRC ALIF Security Screw, ap-length 23 mm

With teeth structure

Cervical

Partnumber	Description
01.03901.305	HRC cervical Cage, size 5, ap-length 12 mm
01.03901.306	HRC cervical Cage, size 6, ap-length, 12 mm
01.03901.307	HRC cervical Cage, size 7, ap-length 12 mm
01.03901.405	HRC cervical Cage, size 5, ap-length 14 mm
01.03901.406	HRC cervical Cage, size 6, ap-length 14 mm
01.03901.407	HRC cervical Cage, size 7, ap-length 14 mm

Lumbar PLIF - Non lordotic

Partnumber	Description
01.03902.408	HRC non lordotic PLIF Cage, size 8, ap-length 22 mm
01.03902.409	HRC non lordotic PLIF Cage, size 9, ap-length 22 mm
01.03902.410	HRC non lordotic PLIF Cage, size 10, ap-length 22 mm
01.03902.411	HRC non lordotic PLIF Cage, size 11, ap-length 22 mm
01.03902.412	HRC non lordotic PLIF Cage, size 12, ap-length 22 mm
01.03902.307	HRC non lordotic PLIF Cage, size 7, ap-length 18 mm
01.03902.308	HRC non lordotic PLIF Cage, size 8, ap-length 18 mm
01.03902.309	HRC non lordotic PLIF Cage, size 9, ap-length 18 mm
01.03902.310	HRC non lordotic PLIF Cage, size 10, ap-length 18 mm

Lumbar PLIF - Lordotic

Partnumber	Description
01.03903.308	HRC lordotic PLIF Cage, size 8, ap-length 22 mm
01.03903.309	HRC lordotic PLIF Cage, size 9, ap-length 22 mm
01.03903.310	HRC lordotic PLIF Cage, size 10, ap-length 22 mm
01.03903.311	HRC lordotic PLIF Cage, size 11, ap-length 22 mm
01.03903.312	HRC lordotic PLIF Cage, size 12, ap-length 22 mm

This document is intended exclusively for experts in the field, i.e. physicians in particular, and is expressly not for the information of laypersons.

The information on the products and/or procedures contained in this document is of a general nature and does not represent medical advice or recommendations. Since this information does not constitute any diagnostic or therapeutic statement with regard to any individual medical case, individual examination and advising of the respective patient are absolutely necessary and are not replaced by this document in whole or in part.

The information contained in this document was gathered and compiled by medical experts and qualified Zimmer employees to the best of their knowledge. The greatest care was taken to ensure the accuracy and ease of understanding of the information used and presented. Zimmer does not assume any liability, however, for the up-to-dateness, accuracy, completeness or quality of the information and excludes any liability for tangible or intangible losses that may be caused by the use of this information.

In the event that this document could be construed as an offer at any time, such offer shall not be binding in any event and shall require subsequent confirmation in writing.

HRC Locking Cage™ is a trademark of Eurospine S.à.r.l.
Manufactured by Eurospine S.à.r.l. and distributed by Zimmer.

Contact your Zimmer Spine representative or visit us at www.zimmerspine.com



HRC Locking Cage™



Innovative thought. Unique design.



Composition

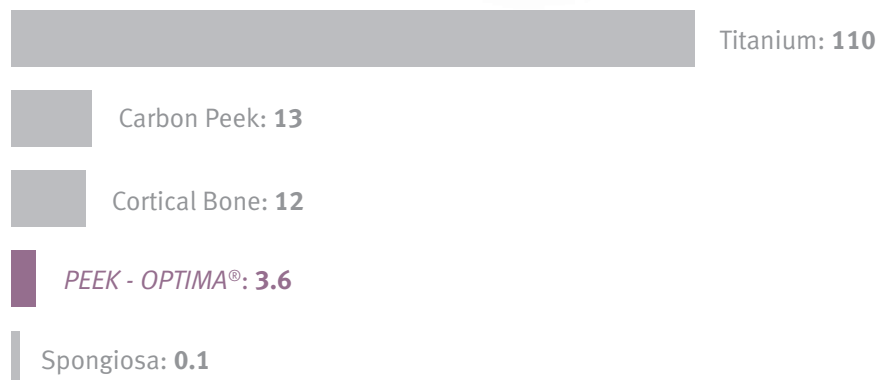
The load bearing part of the cage is made from PEEK-OPTIMA® Polymer with an accompanying titanium blade designed to ensure the device's stability.

The PEEK-OPTIMA® Polymer carries with it two key advantages.



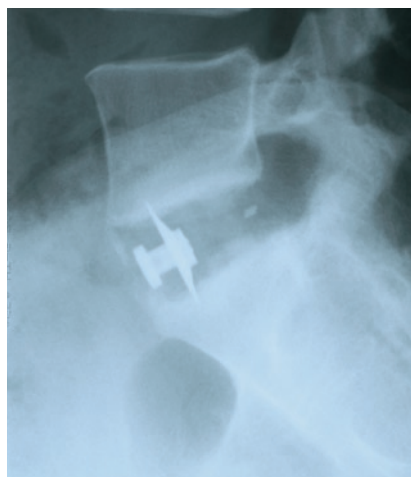
Compatibility

The material displays a high level of biocompatibility, necessary for long-term implantation in the body. The bone-implant interface is improved due to an elasticity modulus closer to cancellous and cortical bone (than titanium, for example) and its durable, flexible characteristics.



Radiolucency

The radiolucent cage is highly transparent to x-rays, and does not generate radiographic distortions. This radiolucency allows reliable positional verification, and therefore more precise post-operative evaluation. The titanium blade and markers on the other side serve as x-ray witnesses to assess exact positioning.

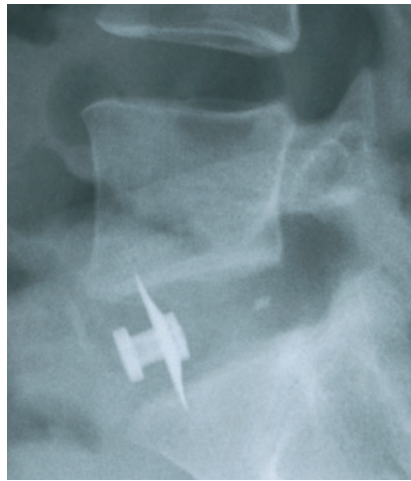


X-ray sagittal plane, 6mth post-op



CT transversal plane, 3mth post-op

Case study



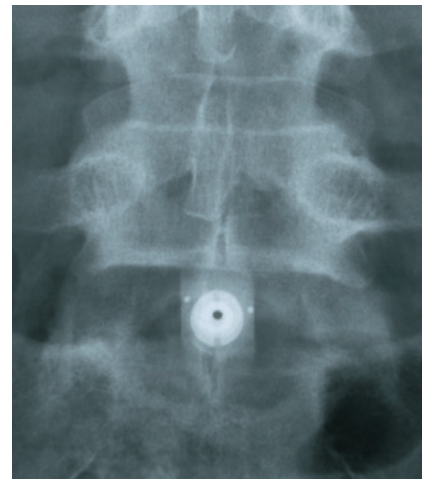
X-ray saggital plane, immediate post-op



X-ray saggital plane, 6mth post-op



X-ray saggital plane, 3mth post-op



X-ray AP plane, immediate post-op

Fusion

The large openings on the devices offer maximized contact area for bone graft and vascularization. Additionally, the material composition both minimizes stress shielding and facilitates bone growth fusion.



Simplicity

The technique associated with the *HRC Locking Cage* is based on straight-forward instrumentation, with the shape of each device consisting of a tapered lead to allow



PLIF



ALIF



Cervical

Proven

The *HRC Locking Cage* product family has been used for lumbar inter-body fusions since 2000, and for cervical inter-body fusions since 2001.

